



Manage this device with Digi Remote Manager

# DIGI IX15

## Programmable gateway connects Digi XBee®-enabled devices to remote applications over cellular and Ethernet

The versatile **Digi IX15** functions as both gateway and router for customers seeking lower-cost, quicker-to-market alternatives to chip-down DIY designs for networking operations. The industrial-grade Digi IX15 connects Digi XBee® modules to cloud applications over cellular or Ethernet, providing the easiest path to Internet connectivity for the **Digi XBee ecosystem** of hardware, software, services and award-winning tools.

With certification for Class 1 Division 2 deployment and rugged enclosure, Digi IX15 is ideal for the harsh environments found in oil and gas, water/wastewater, solar, agriculture and other industrial applications. For developers needing a highly secure, common platform to cut costs and time-to-market, Digi IX15 reduces risk and drives project efficiencies.

The Digi IX15 gateway includes a simple, open source Python

development environment that enables custom applications to perform edge computing locally while providing the most optimal, resilient connectivity between your XBee network and cloud-based applications.

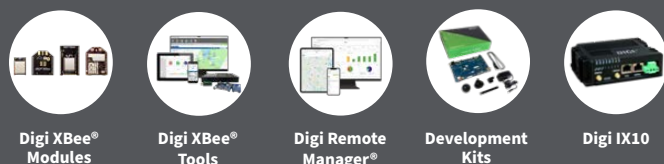
Gain critical insights into your deployed devices and manage your network with **Digi Remote Manager®** (Digi RM) — the command center for your deployment. Digi RM is a cloud-based solution that facilitates easy setup, mass configuration, maintenance and visibility into the health of your network, whether you deploy dozens or thousands of devices.

In the event of an interruption to your primary network connection, Digi RM also provides secure terminal access for out-of-band management of edge devices via serial port and command-line interface.

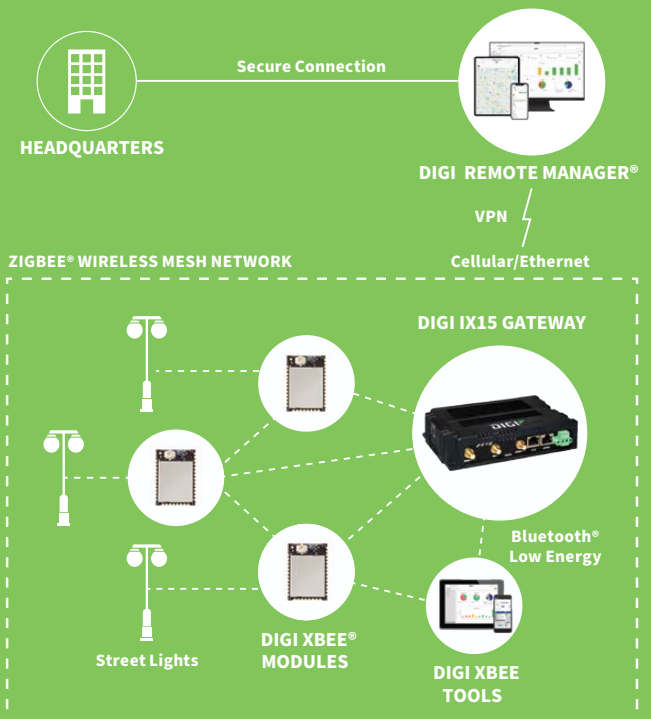
### FEATURES AND BENEFITS

- **Digi XBee®**, (**Zigbee®**, **DigiMesh®**, 802.15.4), Bluetooth® 5.0 and RS-232/485 for connection to local devices
- Open source Python environment for custom application development
- LTE Cat 4 cellular and 10/100 Ethernet WAN connectivity
- **Digi Remote Manager®** platform for easy setup, mass configuration/firmware updates, remote device management and out-of-band management
- Full-featured industrial cellular routing platform
- Redundant connectivity with dual SIMs and **Digi SureLink®**
- Built-in **Digi TrustFence®** for device security, device identity and data privacy

### RELATED PRODUCTS



### APPLICATION EXAMPLE



## SPECIFICATIONS

## DIGI IX15

## DIGI XBEE®

<b>XBEE MODULE</b>	Standard: Digi XBee® 3 Zigbee® 3.0 MMT (XB3-24Z8UM-J); PRO: Digi XBee® 3 PRO Zigbee® 3.0 MMT (XB3-24Z8UM)
<b>ZIGBEE STACK</b>	Zigbee® Standard and Zigbee® PRO versions available
<b>ZIGBEE TRANSMIT POWER</b>	Standard: 6.3 mW (8 dBm); PRO: 63 mW (18 dBm)
<b>ZIGBEE RECEIVER SENSITIVITY</b>	-102 dBm
<b>BLUETOOTH® VERSION</b>	Supports BLE 4.2 and capable of interoperating with BLE 5.0 devices that support 1M PHY. Hardware is software upgradable to 5.0 but not yet enabled except payload extensions (future release).
<b>XBEE CONNECTOR</b>	(1) 50 Ω RP-SMA (center pin: male)

## CELLULAR

<b>CERTIFICATIONS</b>	Visit <a href="http://www.digi.com/resources/certifications">www.digi.com/resources/certifications</a> for latest cellular certifications
<b>BANDS</b>	LTE Cat 4: B1, B2, B3, B4, B5, B7, B8, B12, B13, B18, B19, B20, B25, B26, B28, B38, B39, B40, B41 3G: B1, B2, B4, B5, B6, B8, B19 2G EDGE / GPRS: 850 / 900 / 1800 / 1900 MHz
<b>CONNECTORS</b>	(2) 50 Ω SMA (center pin: female)
<b>SIM SLOTS</b>	(2) Mini-SIM (2FF)
<b>SIM SECURITY</b>	Behind SIM cover, secured with screw (#1 Phillips)

## SOFTWARE AND MANAGEMENT

<b>PYTHON</b>	Python 3
<b>REMOTE MANAGMENT</b>	Digi Remote Manager®; SNMP v2/v3 (user installed/managed)
<b>LOCAL MANAGMENT</b>	WebUI (HTTP/HTTPS); CLI (Telnet, SSH)
<b>MANAGEMENT / TROUBLESHOOTING TOOLS</b>	FTP client, SCP; protocol analyzer with PCAP for Wireshark; event logging with syslog and SMTP client; NTP/SNTP; Nagios, Intelliflow, iPerf, Dynamic DNS, ping, traceroute

## ETHERNET

<b>PORTS</b>	(1) RJ-45; 10/100 Mbps (auto-sensing)
--------------	---------------------------------------

## SERIAL

<b>PORTS</b>	(1) RJ-45 10-pin (10P10C); RS-232/485; software selectable - RS-232 DTE (RXD, TXD, RTS, CTS, DTR, DCD, DSR, RI) - RS-485 (TX/RX+; RX/TX-); half-duplex
--------------	--------------------------------------------------------------------------------------------------------------------------------------------------------------

## PHYSICAL

<b>DIMENSIONS (L x W x H)</b>	157 mm x 106 mm x 35 mm (6.18 in x 4.17 in x 1.38 in)
<b>WEIGHT</b>	0.39 kg (0.86 lb)
<b>STATUS LEDs</b>	Power, SIM, LTE/Internet, XBee, signal strength (5)
<b>ENCLOSURE</b>	Glass-filled polyphenylene sulphide (PPS) / IP30

## POWER REQUIREMENTS

<b>POWER INPUT</b>	9 - 30 VDC, 1.0 A maximum
<b>POWER CONSUMPTION</b>	2.5 W typical (idle); 6 W typical (peak Tx/Rx)

## ENVIRONMENTAL

<b>OPERATING TEMPERATURE</b>	-40° C to 74° C (-40° F to 165° F); device performance may be impacted above 60° C (140° F)
<b>RELATIVE HUMIDITY</b>	5% to 95% (non-condensing)

## APPROVALS

<b>CELLULAR AND REGULATORY</b>	Visit <a href="http://www.digi.com/resources/certifications">www.digi.com/resources/certifications</a> for latest cellular and regulatory approvals
<b>SAFETY</b>	UL60950-1, IEC62368-1, CB, EN62311, UL 121201/CSA 213 (Class 1, Div 2)
<b>ENVIRONMENTAL</b>	ROHS3
<b>EMISSIONS / IMMUNITY</b>	CE; RED; FCC Part 15, Subpart B*; ICES-003; AU/NZS CISPR32

## WARRANTY

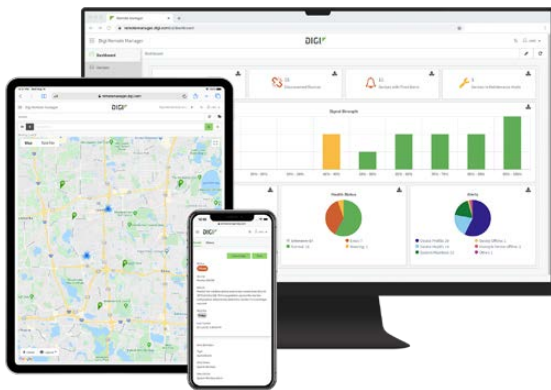
<b>PRODUCT WARRANTY</b>	3-year**
-------------------------	----------

\* Compliant to limits for a Class A digital device when tested with power supply 76002104.

\*\*Standard 3-year warranty upgradeable to 5 years with purchase of a Digi Remote Manager Premier 5-year subscription applicable to the product purchased only at the time of product purchase and with product registration at that time in Digi Remote Manager.

ENTERPRISE SOFTWARE	DESCRIPTION
PROTOCOL SUPPORT	HTTPS, FTP client, TLS v1.2, SCP (client and server), SFTP, SMTP client for use by scripts and the command line, SNMP (v2/v3), SSH; remote management via <b>Digi Remote Manager</b> <sup>®</sup> ; protocol analyzer, ability to capture PCAP for use with Wireshark; DynDNS; dynamic DNS client compatible with BIND9/No-IP/DynDNS; captive portal, Intelliflow; Nagios, DNS server, NTP server, multicast, mDNS, IPPerf
SECURITY	IP filtering, stateful firewall, custom firewall rules (iptables), address and port translation; TLS 1.2 and above, OpenVPN client and server; VPN tunnels; authentication: RADIUS, TACACS+; certificates; MAC address filtering; VLAN support
VPN	IPSec with IKEv1, IKEv2, NAT Traversal; OpenVPN client and server; GRE VPN tunnels; cryptology: SHA-1/256/384/512, MD5, RSA; encryption: 3DES and AES up to 256-bit (CBC mode for IPsec); Diffie Hellman: DH groups 1-32 (CURVE448)
ROUTING / FAILOVER	IP pass-through; NAT, NAPT with IP port forwarding; GRE; multicast routing; routing protocols: RIP (v1, v2) OSPF, BGP; IP failover: VRRP; automatic failover, <b>Digi SureLink</b> <sup>®</sup>
OTHER PROTOCOLS	DHCP; dynamic DNS client compatible with No-IP/DynDNS

## DIGI REMOTE MANAGER<sup>®</sup>



Digi Remote Manager is the technology platform that brings networks to the next level, allowing networks — and the people who manage them — to work smarter. With Digi Remote Manager you can transform a multitude of dispersed IoT devices into a dynamic, intelligent network. Now you can easily deploy, monitor and diagnose thousands of mission-critical devices from a single point of command — on your desktop, tablet or phone. All the while, its software-defined security diligently safeguards your entire Digi ecosystem.

Learn more at [www.digi.com/digi-remote-manager](http://www.digi.com/digi-remote-manager)

### CAPABILITIES

- Activate, monitor and diagnose your mission-critical devices from a single point of command and control — on your desktop or mobile app
- Schedule key operations — including firmware updates and file management — on a single device or on a group of devices, keeping your network functionality up-to-date and maintaining compliance standards
- Manage edge devices out-of-band via console terminal access
- Keep tabs on device health and connectivity across device deployments of any size
- Create detailed reports and enable real-time alerts for specified conditions
- Integrate device data through open APIs to gain deeper insights and control with third-party applications
- Report and alert on performance statistics, including connection history, signal quality, latency, data usage and packet loss

### INFRASTRUCTURE

- Hosted in a commercial-grade cloud server environment that meets SOC 1<sup>®</sup>, SOC 2<sup>®</sup> and SOC 3<sup>®</sup> standards
- Superior availability, operating to 99.9% or greater
- Open APIs available to support application development

### SECURITY

- More than 175 security controls in place to protect your data
- Member of the Center for Internet Security<sup>®</sup> (CIS<sup>®</sup>)
- Enables compliance with security frameworks like ISO27002, HIPAA, NIST and more
- Earned Skyhigh's CloudTrust<sup>™</sup> Program highest rating of Enterprise-Ready

## PRODUCT IMAGES

### FRONT



### BACK



PART NUMBERS	DIGI IX15
IX15-00G4-XB2	Digi IX15 - XBee 3, LTE Cat 4, (1) Ethernet, RS-232/485
IX15-00G4-XBP2	Digi IX15 - XBee 3 PRO, LTE Cat 4, (1) Ethernet, RS-232/485

PART NUMBERS	ACCESSORIES*
76002107	Digi IX15 2.4 GHz Accessory Kit
76002104	Power supply with plug tips for US, UK, EU, AU
DC-ANT-24DT	(1) Magnetic table-top 2.4 GHz antenna
76002103	(1) Cellular antenna (order quantity 2)
76002095	DIN rail clip kit
76000645	Cable, RJ45M/DB09F, 48", connects EIA 422/485 devices to Digi products that have 10-pin RJ-45 connectors**

\*Sold separately, unless otherwise noted.

\*\*For RS-232 cabling pinouts and recommended cables, please refer to the Digi products cabling guide at: [www.digi.com/resources/documentation/Digidocs/PDFs/90000253.pdf](http://www.digi.com/resources/documentation/Digidocs/PDFs/90000253.pdf)

PART NUMBERS	DIGI REMOTE MANAGER®
DIGI-RM-STD-1YR	Digi Remote Manager Standard - 1-year subscription
DIGI-RM-PRM-1YR	Digi Remote Manager Premier - 1-year subscription
DIGI-RM-PRM-3YR	Digi Remote Manager Premier - 3-year subscription
DIGI-RM-PRM-5YR	Digi Remote Manager Premier - 5-year subscription

FOR MORE INFORMATION  
PLEASE VISIT [DIGI.COM](http://DIGI.COM)

**DIGI SERVICE AND SUPPORT** / You can purchase with confidence knowing that Digi is always available to serve you with expert technical support and our industry leading warranty. For detailed information visit [www.digi.com/support](http://www.digi.com/support).

© 1996-2021 Digi International Inc. All rights reserved.  
All trademarks are the property of their respective owners.

91004450  
B5/921

**DIGI INTERNATIONAL WORLDWIDE HQ**  
877-912-3444 / 952-912-3444 / [www.digi.com](http://www.digi.com)

**DIGI INTERNATIONAL JAPAN**  
+81-3-5428-0261 / [www.digi-intl.co.jp](http://www.digi-intl.co.jp)

**DIGI INTERNATIONAL GERMANY**  
+49-89-540-428-0

**DIGI INTERNATIONAL SINGAPORE**  
+65-6213-5380

**DIGI INTERNATIONAL CHINA**  
+86-21-50492199 / [www.digi.com.cn](http://www.digi.com.cn)

