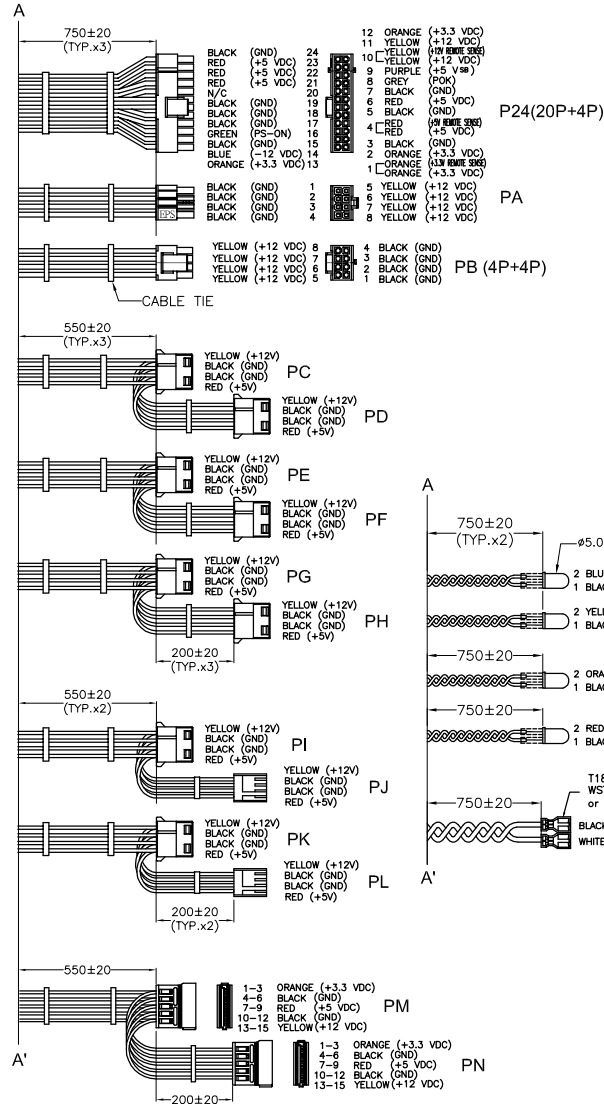
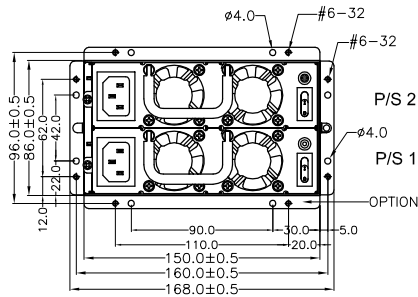
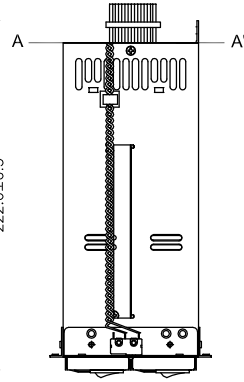
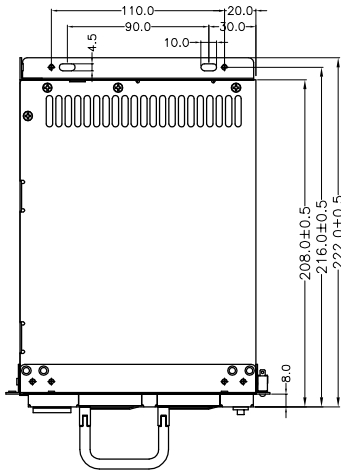
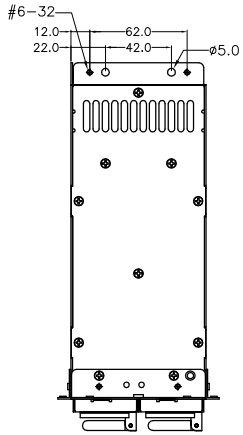
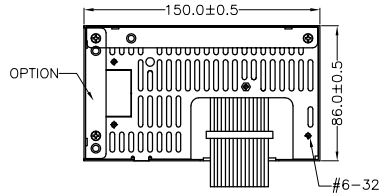


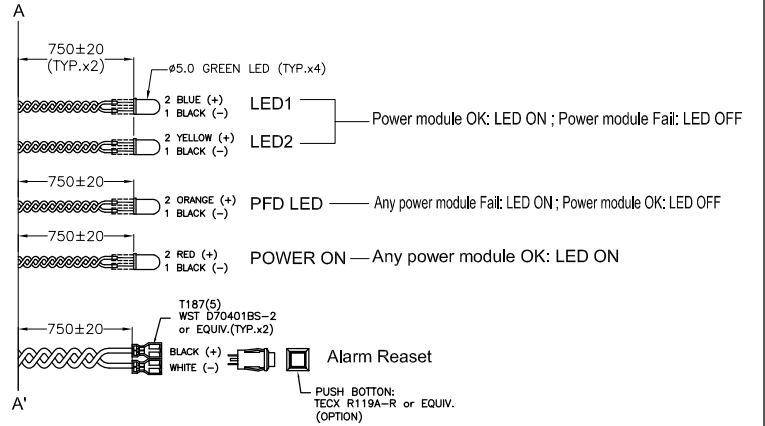


出圖章
 JUN-04-2014
研發本部

版次 REV.	修訂 REVISIONS 記述 DESCRIPTION	日期 DATE



- Notes:
- All the Length of Output Wires Exclude Housing.
 - P24 Connector: WST P24-I42002K2 or EQUIV.
Terminal: MOLEX 39-00-0059 or EQUIV.
 - PA Connector: MOLEX 39-01-2080 or EQUIV.
Terminal: MOLEX 39-00-0059 or EQUIV.
 - PB Connector: WST P6-I42002K13-FRE5 + P2-I42002K13A-FRE1 or EQUIV.
8P(6P+2P) PCI Express
Terminal: MOLEX 39-00-0059 or EQUIV.
 - PC~PI,PK Connector: AMP 1-480424-0 or EQUIV.
Terminal: AMP 61117-4 or EQUIV.
 - PJ,PL Connector: AMP 171822-4 or EQUIV.
Terminal: AMP 170262-1 or EQUIV.
 - PM,PN Connector: MOLEX 675820000 or EQUIV.
Terminal: MOLEX 675810000 or EQUIV.



容許公差:
TOLERANCES:

.XXX	±.025
.XX	±.100
.X	±.250

材料規格:
MATERIAL:

核准者: 范智富
APPROVE BY: 范智富

日期: JUN-04-2014
DATE: JUN-04-2014

審核者: 宋國全
CHECK BY: 宋國全

日期: JUN-04-2014
DATE: JUN-04-2014

繪圖者: 林意紋
DRAW BY: 林意紋

日期: JUN-04-2014
DATE: JUN-04-2014

投影法:
PROJECTION:

第三角法

新巨企業股份有限公司
ZIPPY TECHNOLOGY CORP.
 POWER DIVISION

品名: **MRG-5700V4V**
MODEL NO: